

C C A T T 0 1 0 0 0  
G A G G A 0 1 1 0 1  
G A A T T 0 0 1 1 0  
A C A A G 0 0 1 0 0  
T A C C A 0 0 1 1 0  
T T A C A 0 1 0 0 0  
A C C T C 0 0 0 1 0  
A A G G A 0 0 0 0 0  
G A T G A 0 1 1 0 0  
T A G A T 0 0 1 0 0  
G A T G A 1 0 1 0 0  
T G T A G 1 0 0 0 0  
T A G T A 0 0 0 0 0  
G A T A T 1 0 0 0 0  
G A G T G 0 1 0 0 0  
A G A T T 0 1 0 0 0  
G A G T A 0 1 0 0 0  
T G A T G 0 1 0 0 0  
A T T A G 0 0 0 0 0  
T A G A T 0 0 0 0 0  
G A G A 0 0 0 0 0  
G T A 0 0 0 0 0  
G A T 0 0 0 0 0  
T A G 0 0 0 0 0  
A G A 0 0 0 0 0  
G A G 0 0 0 0 0  
A T 0 0 0 0 0

# Tutorial

## Tutorial: Getting started

December 15, 2009



## Tutorial: Getting started

This brief tutorial will take you through the most basic steps of working with *CLC Sequence Viewer*. The tutorial introduces the user interface, shows how to create a folder, and demonstrates how to import your own existing data into the program.

When you open *CLC Sequence Viewer* for the first time, the user interface looks like figure 1.

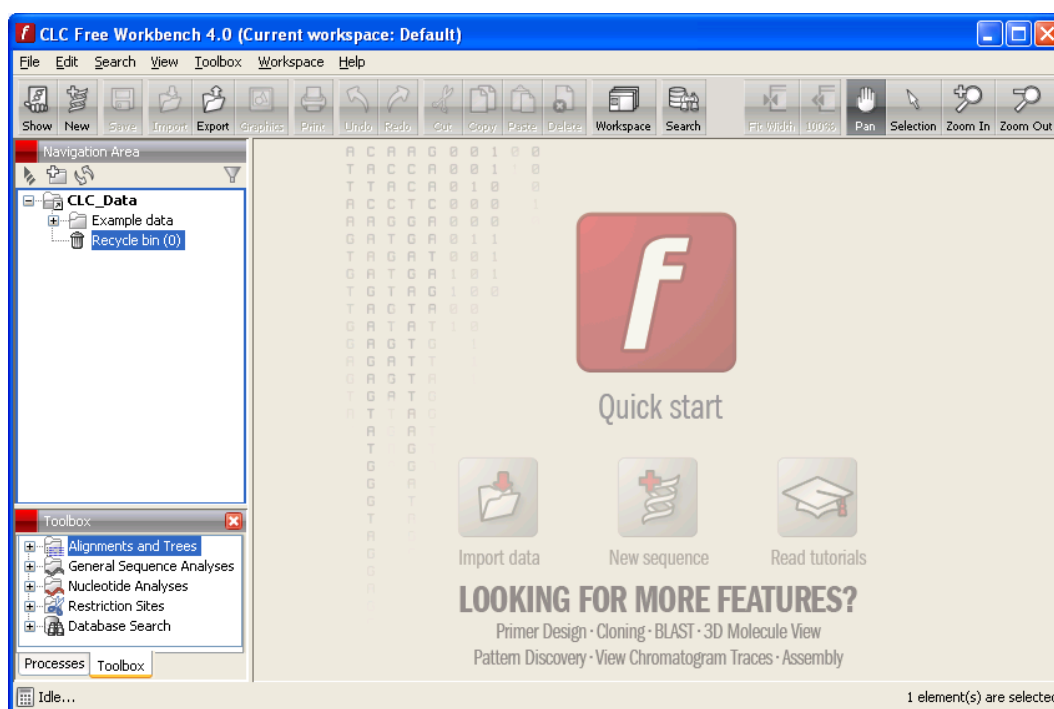


Figure 1: The user interface as it looks when you start the program for the first time. (Windows version of **CLC Sequence Viewer**. The interface is similar for Mac and Linux.)

At this stage, the important issues are the **Navigation Area** and the **View Area**.

The **Navigation Area** to the left is where you keep all your data for use in the program. Most analyses of *CLC Sequence Viewer* require that the data is saved in the **Navigation Area**. There are several ways to get data into the **Navigation Area**, and this tutorial describes how to import existing data.

The **View Area** is the main area to the right. This is where the data can be 'viewed'. In general, a **View** is a display of a piece of data, and the **View Area** can include several **Views**. The **Views** are represented by tabs, and can be organized e.g. by using 'drag and drop'.

### Creating a folder

When *CLC Sequence Viewer* is started there is one element in the **Navigation Area** called **CLC\_Data**<sup>1</sup>. This element is a **Location**. A location points to a folder on your computer where your data for use with *CLC Sequence Viewer* is stored.

The data in the location can be organized into folders. Create a folder:

<sup>1</sup>If you have downloaded the example data, this will be placed as a folder in *CLC\_Data*

**File | New | Folder** (📁)

or **Ctrl + Shift + N** (⌘ + Shift + N on Mac)

Name the folder 'My folder' and press **Enter**.

## Import data

Next, we want to import a sequence called HUMDINUC.fsa (FASTA format) from our own Desktop into the new 'My folder'. (This file is chosen for demonstration purposes only - you may have another file on your desktop, which you can use to follow this tutorial. You can import all kinds of files.)

In order to import the HUMDINUC.fsa file:

**Select 'My folder' | Import** (📁) **in the Toolbar | navigate to HUMDINUC.fsa on the desktop | Select**

The sequence is imported into the folder that was selected in the **Navigation Area**, before you clicked **Import**. Double-click the sequence in the **Navigation Area** to view it. The final result looks like figure 2.

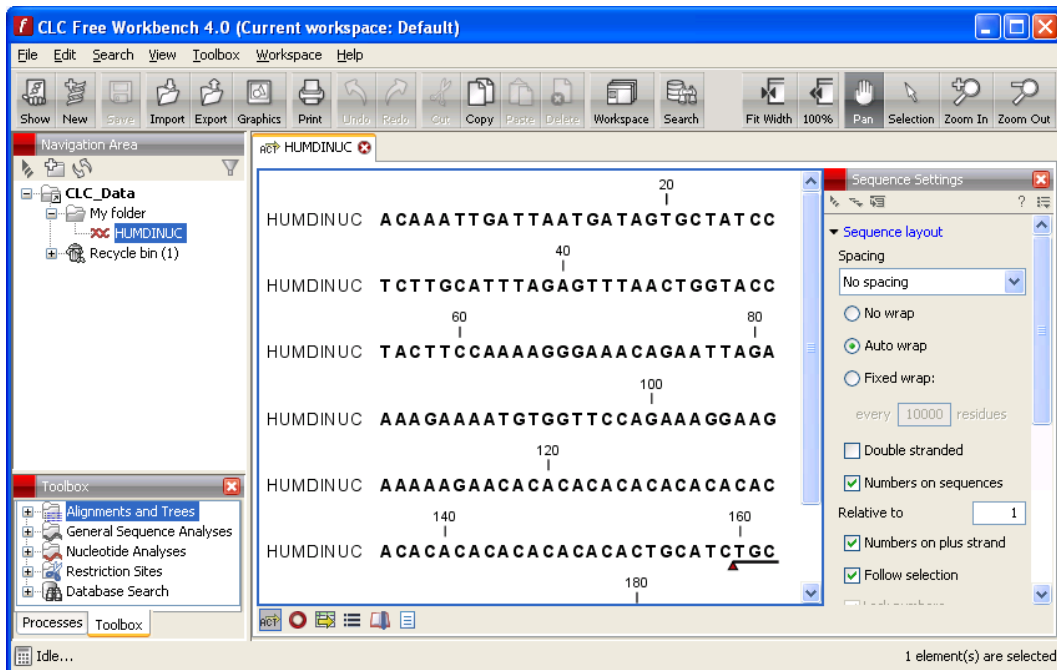


Figure 2: The HUMDINUC file is imported and opened.